

Year 6 Curriculum Information Powerpoint

Purpose of this

- To give you some general information about life in Year 6!
- To look at the curriculum in Year 6.
- To tell you about the SATs in Year 6.
- To give you some information about key events this year.

General Information

- Mrs Kealey will be working in our class supporting and covering PPA.
- Maths, SPaG and Reading homework will be sent out on a Friday to be completed by the following Wednesday.
- PE will take place on Mondays and Fridays.
- If you are self isolating, work (Maths, English and Topic) will be set on Google Classroom. Please ensure your child completes this.

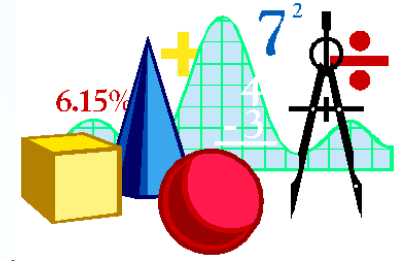
RE

- Called to Serve
- Justice
- Exploring the Mass
- Jesus, the Messiah
- The Kingdom of God
- Faith in Action
- Daily Collective Worship and prayers – every child will lead a Collective Worship in groups
- RE will also include the Circle times based on the Virtues to Live By

Confirmation

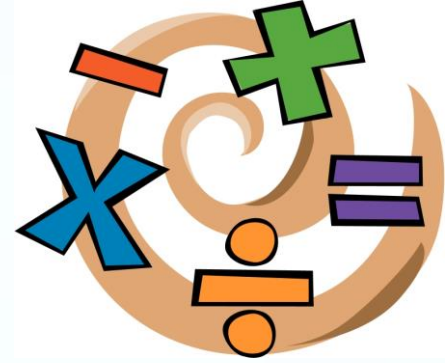
- MEETINGS: (every Thursday, from 3:15 to 4:15)
- 30th September
- 7th October
- 14th October
- 4th November
- 11th November
- 18th November
- 25th November
- **Enrolment Mass** 17th November @ 11:15am
- **Confirmation:** 27th November @ 10am
- **Go Forth:** 5th December @ 11:15am

Maths



- Big focus on embedding four operations and place value (include decimals and fractions)
- Aim is for all children to move towards using formal calculation methods as well as mental methods – they may also use jottings and drawings
- Solving word problems – implementation of skills
- Times tables up to 12 x 12
- Developing mental maths skills
- Shape – properties of shape; angles; areas of shape; translating & reflecting shapes
- Measures – km to m/ l to ml
- Algebra, ratio and proportion
- Data Handling - reading and interpreting different graphs and tables
 - **Encourage your child to access Times Table Rock Stars**

Operations



- The four we will focus on are:
- Column addition
- Column subtraction

$$\begin{array}{r} 376 \\ 495 \\ \hline 1 \quad 1 \\ \hline 871 \end{array}$$

$$\begin{array}{r} 4 \quad 1 \\ \cancel{5}46 \\ - \quad 55 \\ \hline 491 \end{array}$$

- Long Multiplication

	HTh	TTh	Th	H	T	O	
			3	1	5	1	
x					3	6	
					1	8	
+			1	8	9	0	6 (3 1 5 1 x 6)
			9	4	5	3	0 (3 1 5 1 x 3 0)
			1	1			
			1	1	3, 4	3	6

Area model

x	20	3
10	200	30
8	160	24

$$200 + 160 + 30 + 24 = 414$$

Division

- Short division

$$\begin{array}{r} 99 \\ 5 \overline{) 495} \end{array}$$

- Long division

$$\begin{array}{r} 035.53 \\ 13 \overline{) 462.000} \\ \underline{- 39} \\ 72 \\ \underline{- 65} \\ 70 \\ \underline{- 65} \\ 50 \\ \underline{- 39} \\ 11 \end{array}$$

13
26
39
52
65
78
91
104
117
130
143
156

English



Areas for writing:

- Narrative genres and flashbacks
- Biographies and autobiographies
- Poetry
- Balanced arguments
- Formal/Informal writing
- Journalism
- Report Writing
- All these will be covered in our themed books/videos, they are: The Arrival, Anne Frank, Can we save the Tiger, Suffragettes: The Equality Battle, Three Little Pigs Project, Romeo and Juliet and Some Places More than Others.

Writing will also be addressed through other areas of the curriculum – History, Geography, RE & Science

• using paragraphs to organise ideas	
• describing settings and characters	
• using some cohesive devices* within and across sentences and paragraphs	
• using different verb forms mostly accurately	
• using co-ordinating and subordinating conjunctions	
• using mostly correctly	capital letters
	full stops
	question marks
	exclamation marks
	commas for lists
	apostrophes for contraction
• spelling most words correctly* (year 3 and 4)	
• spelling some words correctly* (year 5 and 6)	
• producing legible joined handwriting.	

Working Towards

• creating atmosphere, and integrating dialogue to convey character and advance the action	
• selecting vocabulary and grammatical structures that reflect the level of formality required mostly correctly	
• using a range of cohesive devices*, including adverbials, within and across sentences and paragraphs	
• using passive and modal verbs mostly appropriately	
• using a wide range of clause structures, sometimes varying their position within the sentence	
• using adverbs, preposition phrases and expanded noun phrases effectively to add detail, qualification and precision	
• using mostly correctly	inverted commas
	commas for clarity
	punctuation for parenthesis
• making some correct use of	semi-colons
	dashes
	colons
	hyphens
• spelling most words correctly* (year 5 and 6)	
• maintaining legibility, fluency and speed in handwriting through choosing whether or not to join specific letters.	

Working at Expectations

English - SPAG

- Spelling, Punctuation and Grammar
- Focusing on Spelling patterns in class and through SPaG homework.
- All aspects of grammar – parts of a sentence, word usage, homophones, sentence construction etc.
- Punctuation

Spelling is
~~diffecolt~~
~~challageng~~
hard.

Spelling

- Trialling a new scheme until December
- Focusing on the teaching of spelling through patterns, graphemes, phonemes and rules.
- No spelling lists sent home
- Spelling will be incorporated into the school day through discrete spelling lessons and in English and other lessons.

English - Reading

- Types of question – retrieval; inference & deduction; vocabulary & author's style
- Class Texts – Over the Line; The White Horse of Zennor; Kensuke's Kingdom; various poetry & Shakespeare
- Please encourage your child to read regularly with books they enjoy too!

Reading

- Change when necessary
- Check up on children not changing books throughout the week
- Reading raffle on a Friday
- Children will receive raffle tickets for reading throughout the week:

Read x3 = 1 ticket

Read x5 = 2 ticket

Read x8 = 3 tickets

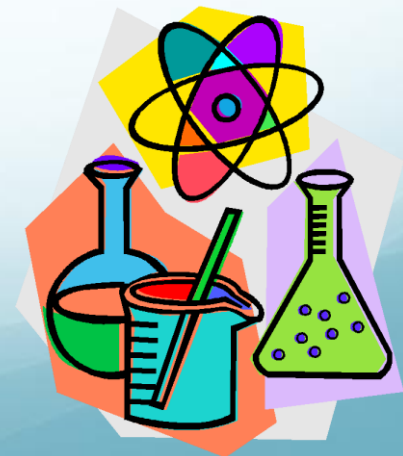
Read x10 = 4 tickets

Read x12 = 5 tickets

Children must read for a good amount of time/chapters to gain a “read”.

Science

- Evolution and Adaptation
- Electricity
- Animals including humans – circulation & digestion
- Living things and their habitats
- Light and Shadow



Long Term Plan

Year 6 Long Term Plan 2021-22

	Autumn 1 (7 weeks)	Autumn 2 (7 weeks)	Spring 1 (7 weeks)	Spring 2 (5 weeks)	Summer 1 (6 weeks)	Summer 2 (7 weeks)
RE	Called to Serve	Justice	Exploring the Mass	Jesus, Son of God	The Kingdom of God	Faith in Action
Maths	Place Value Number - Addition, Subtraction, Multiplication & Division	Fractions Geometry - Position & Direction	Number - Decimals Number - Percentages Number - Algebra Measurement -converting units	Measurement - perimeter, area & Volume Measurement: Converting units Ratio	Statistics Geometry: Properties of shapes Revision	Investigations Themed projects
English	<i>The Arrival</i> <i>The Land Army - persuasive text</i>	<i>War Poetry</i> <i>Anne Frank</i>	<i>Can we save the tiger?</i> <i>Recount diary - The Galapagos Islands</i>	The Three Little Pigs Project. Suffragette: The battle of empowerment	<i>Romeo and Juliet</i> <i>(Book and film)</i>	Some Places More Than Others
Guided reading	"Over the Line"		Kensuke's Kingdom		<i>War Horse</i>	
Art/DT	<i>Art and design skills - Make a WW2 hat</i>	<i>Electrical systems - Handheld games</i>	<i>Make my voice heard</i>	<i>Mechanical systems: Automata toys</i>	<i>Photography</i>	<i>Come dine with me</i>
Computing	<i>Computing systems and networks - Communication</i>	<i>Creating media - 3D modelling</i>	<i>Creating media - Web page creation</i>	<i>Data and information - Spreadsheets</i>	<i>Programming A - Variables in games</i>	Programming B - Sensing
Geography & History	<i>Remembrance</i>	<i>Remembrance</i> <i>Is Otley a significant place?</i>	<i>United Kingdom</i>	<i>Tudors</i>	<i>Tudors</i>	<i>Local area and region</i>
PE	Athletics (IT) Rugby	Dance (IT) Fitness	Gymnastics (IT) Basketball	Tennis (IT) Hockey	Cricket (IT) Netball	Football (IT) Rounders (PHGS)
PSHE	Healthy Relationships		Living in the Wider World		Health and Wellbeing	
RSHE					How a baby is made Seeing stuff online	
Science	Evolution & Inheritance	Electricity	Animals including humans	Living things & their habitats	Light	Scientists
French	French sport and the Olympics	French Football champions	In my French house	Planning a French Holiday	Visiting a town in France	Café - food
TOPIC WEEKS	Black History	Anti-bullying week				Health and wellbeing week

Assessment

- After the children have sat their tests. The results will be given in the form of a number.
- 100 and above will be achieving the national standard.
- Below 100 will be working towards the national standard.
- Over 110 will be greater depth.

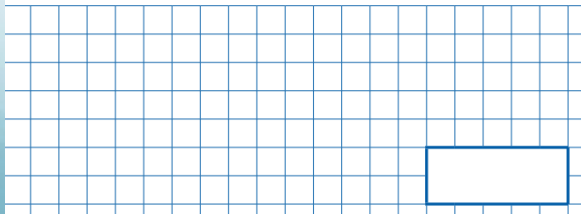
SATs

- Week commencing the 10th May
- SATs breakfast each morning.
- Order of the papers:
 - Monday – SPAG
 - Tuesday – Reading Comprehension
 - Wednesday – Maths Paper 1 and 2
 - Thursday – Maths Paper 3

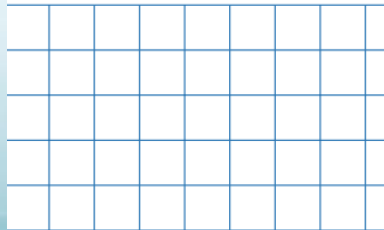
Maths

- There will be 3 papers.
- Paper 1 will be a calculations paper and will be 30 minutes with 36 questions.
- Paper 2 & 3 will be problem solving, shape, space & measure. They will each be 40 minutes long with between 20-25 questions each.
- No calculators are allowed.

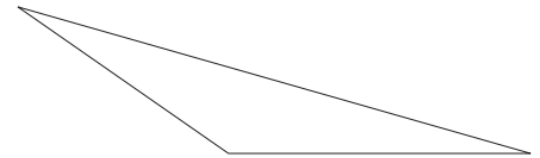
$$2.5 + 0.05 =$$



$$\frac{3}{4} + \frac{7}{8} =$$



Here is a triangle.



Measure the shortest side accurately, in centimetres.

English

- Spelling test will be 20 words
- Grammar test will be about 45-50 questions in 45 minutes.
- Reading test will be 1 hour long to read 3 texts and answer questions.
- Writing will be assessed in school over the year.

1 Look at the introduction.

Why is space tourism *impossible* for most people?

1 m

How does the first paragraph suggest that the characters are in a 'lost world'?

Tick one box in each row to show how the **modal verb** affects the **meaning** of the sentence.

Sentence	Modal verb indicates certainty	Modal verb indicates possibility
It will be very cold tomorrow.		
John might have missed the train.		
Ann can speak six languages.		
You could finish your work by the end of the lesson.		

Other Key Events – Autumn

- Macmillan Coffee Morning – 24th September
- Individual photographs – 21st September
- Saint's Day – 1st October
- Harvest Assembly – 1st October
- Black History Assembly – 15th October
- Parents Evening – 18th and 21st October
- Training day – 22nd October
- Anti-Bullying Week – 15th November
- Advent Assembly– 26th November
- Christmas Dinner and Jumper Day – 9th December
- Christmas Party Day – 16th December

Other Key Events – Spring

- Bikeability - Spring Term 2022 (bikes and helmets provided if needed)
- Residential – Herd Farm 16th March – 18th March
They need outdoor shoes that they don't mind getting wet/muddy and waterproof jacket. Warm clothes, hats and gloves. No mobile phones or electrical items. Some activities are: Archery, Bush Crafts, Big Swing.
- Parents Evening – 28th and 30th March

Other Key Events – Summer

- SATs – Week beginning May 10th.
- Transition to high school – series of visits/events for the children to take part in to familiarise them with their chosen high school.
- St Mary's Menston –TBC (Usually first week in July)
- Prince Henry's – Normally 3 days in July
- Parents' meeting (high school) – TBC
- Year 6 production – Week commencing 11th July
- Year 6 leavers' Mass & assembly – 20th July 6pm
- Year 6 leavers' party – Thursday 21st July

Secondary School Application

- Deadline for application is 31st October
- For St Mary's Menston, you must send a supplementary information form by that date.
- [Admissions - St. Mary's Menston Catholic Voluntary Academy](#)

Websites

- Google Classroom
- My Maths
- Times Table RockStars
- Love reading 4 kids
- BBC Bitesize

Any Questions?

- If you have any question to do with the office, email office@stjosephsotley.org